

# Weave away with KBA at our 25<sup>th</sup> Convention



## KENTUCKY BASKET ASSOCIATION

**October 7, 8, 9, 2021 Annual Convention**

<http://www.kentuckybaskets.org/>

The Center for Rural Development, 2292, US-27 #300, Somerset, Kentucky  
*Celebrating 25 YEARS of fun, friendships, and basket weaving in the  
Commonwealth*



The Center for Rural Development

Somerset, Kentucky

October 7, 8, 9, 2021

Gail Loeser, Treasurer

8268 Eastdale Drive

Cincinnati, OH 45255

# KBA Convention Registration Form

## October 7 – 9, 2021

This form can be downloaded and printed from our website:

[www.kentuckybaskets.org](http://www.kentuckybaskets.org)

**Be sure your class selections are legible and accurate.**

Name \_\_\_\_\_

Address \_\_\_\_\_

City, State, Zip \_\_\_\_\_

Phone: \_\_\_\_\_ Evening \_\_\_\_\_

Email \_\_\_\_\_

List classes in order of preference by class code, **example TH 01**. Please pay attention to class times so your selections do not overlap. Pick 2<sup>nd</sup> and 3<sup>rd</sup> choices. Classes can fill up quickly or be cancelled by the instructor. Do not list classes that you are not willing to take as this may cause someone to lose their spot in a class they wanted. **Please note if you are only requesting a kit.**

### Thursday Afternoon

(1) \_\_\_\_\_ (2) \_\_\_\_\_ (3) \_\_\_\_\_

### Thursday Evening

(1) \_\_\_\_\_ (2) \_\_\_\_\_ (3) \_\_\_\_\_

### Friday Morning

(1) \_\_\_\_\_ (2) \_\_\_\_\_ (3) \_\_\_\_\_

### Friday Aft/Evening

(1) \_\_\_\_\_ (2) \_\_\_\_\_ (3) \_\_\_\_\_

### Saturday

(1) \_\_\_\_\_ (2) \_\_\_\_\_ (3) \_\_\_\_\_

- Choose your 3 favorite baskets for each day; and remember there are morning and afternoon sessions
- Registration will be done on a 1<sup>st</sup> come basis.

- Include a stamped, self-addressed 4 x 9 envelope
- You can fill out the form online, but if you fill it out manually, please include it with your checks to Gail Loeser, Treasurer
- Make a check for \$15.00 to Kentucky Basket Association for your yearly membership
- Make a check to Kentucky Basket Association for your Convention Registration Fee (see below)

**EarlyBird:** \$35.00 Postmarked on or before May 31<sup>st</sup>

**Regular:** \$45.00 Postmarked on or before June 30<sup>th</sup>

**Late:** \$55.00 Postmarked after June 30<sup>th</sup>

**1 Day:** \$20.00 (will be assigned after Early Bird Registration)

**MAIL class checks, Registration check, Membership check, self-addressed envelope and this form to:**

**Gail Loeser, 8268 Eastdale Dr., Cincinnati, OH 45255**

- If you do not get your 1st choice class, we will return your check and request a check for the next available class you chose.
- If you cancel from a class or the convention, you must do so in writing by Sept. 1st
- Cancellations are subject to a cancellation fee.
- After Sept. 1st you will need to contact the teacher to pick up your kit.

Email Gail at [loeserg@yahoo.com](mailto:loeserg@yahoo.com) with any questions.

## Checklist:

\_\_\_\_ I am a new member

\_\_\_\_ I do NOT wish to have my picture posted on Facebook or the website

\_\_\_\_ Stamped, self-addressed 4 X 9 envelope

\_\_\_\_ Separate Checks made out to Kentucky Basket Association for registration and membership

\_\_\_\_ Individual checks made out to the teachers of your first-choice classes and any kits you want

\_\_\_\_ I would like to be on the KBA Board

\_\_\_\_ I would like to volunteer to help during convention. Please contact me and let me know where I can be of assistance.

\_\_\_\_ I will be attending KBA Annual Meeting and Lunch (which is provided)

## Saturday's Baskets

SA07 8:30 AM - 3:30 PM

Toss It by Dani Sue Anderson \$55.00



All Levels HRS: 6  
SIZE: 10" diameter  
x12" height

Come weave a stylish waste basket with me that will add character to any space, may it be an office, studio, craft room, or bathroom. For this project we will use a plastic trashcan that is securely attached to a 6" round wooden base. This basket is woven with a continuous weave and a cute folded rim. Contact me for color options before the conference.

SA08 8:30 AM - 3:30 PM

Trevor's Sweet Stash by Jan Beyma \$85.00



Intermediate HRS: 6  
SIZE: 4"x5"

Students will learn to set up a Nantucket. They will also learn to weave a twill into their basket. Basket will be woven with cane staves and weavers. A slip-on rim will finish off the baskets. The base, rim and lid will be Cherry and pre-finished. Basket will be woven over a class plastic mold. Tools will be provided.

## COVID Precautions

Teachers, vendors, and attendees will be required to abide by any and all Covid-19 guidance and restrictions in effect at the time of the Convention, as issued by the CDC and the Commonwealth of Kentucky.

## Welcome to KBA's 25<sup>th</sup> Convention:

We are so excited to weave with you on October 7, 8, 9 at The Center for Rural Development in Somerset, KY. Our membership is \$15 and the convention registration is a sliding scale based on the date your checks are postmarked.

## How to Weave away with us in October:

There is a form at the end of this brochure or online at [www.kentuckybaskets.org](http://www.kentuckybaskets.org)

- Choose your 3 favorite baskets for each day; and remember there are morning and afternoon session
- Fill out the form online. If you fill it out manually, please include it with your checks to Gail Loeser, Treasurer
- Make a check \$15.00 to Kentucky Basket Association for your membership
- Make a check to Kentucky Basket Association for your Registration Fee (see below)

**EarlyBird:** \$35.00 Postmarked on or before May 31<sup>st</sup>

**Regular:** \$45.00 Postmarked on or before June 30<sup>th</sup>

**Late:** \$55.00 Postmarked after June 30<sup>th</sup>

**1Day:** \$20.00

- Make a check to **each teacher** for your 1<sup>st</sup> choice baskets for the **class cost** and **POSTDATED** for the day of the class
- Send a self-addressed, stamped 4x9 envelope with your checks for the teachers and your membership to Gail Loeser, 8268 Eastdale Drive, Cincinnati, OH 45255. Email is [loeserg@yahoo.com](mailto:loeserg@yahoo.com)

If you must cancel from a specific class OR the entire convention, do so in writing and it must be received by September 1<sup>st</sup>. There is a cancellation fee. After Sept. 1<sup>st</sup>, there are no refunds and you will need to make arrangements to pick up your kit or have it mailed to you.

## Thursday's Baskets

TH01 12:00 PM - 4:00 PM

Staying Neutral by Dani Sue Anderson \$60.00



In a world full of strong feelings, this basket is a reminder that sometimes the best thing to do is to stay neutral. This basket features a square woven base with a D handle, shaped to meet a wooden oval hoop rim.

All Levels HRS: 4

SIZE: 12"x8 1/2"x14"  
w/handle

TH02 12:00 PM - 4:00 PM

Roof and fairy door for Fairy House Basket by Cheryl Dixon \$35.00



Learn how to make a roof for the fairy house basket and a door or 2 depending on the time. Students will learn to make their own mold for the roof. You might want to buy the kit for the basket and learn how to make the roof and door in this class. I have a variety of tools, molds and texture sheets to use. **NOTE: Polymer clay tools are welcome but not required.**

All Levels HRS: 4

TH03 12:00 PM - 9:00 PM

Bowl of Color by Pam Milat \$70.00



This bowl challenges the Advanced student with 3 techniques. The cat head base and sides are woven in 2/2 twill, and the basket is completed with a Gretchen rim. Each student will personalize their basket with the order placement of the 20 start/stop weavers, each a different color of dyed reed. Not all students will complete the rim of their basket within the class time but will have sufficient material and instruction to do so independently. **Special Tools required: 2-3 spoke weights (cloth works best); 24+ gator clips**

Advanced HRS: 8

SIZE: 4 1/2"x9"

## Saturday's Baskets

SA04/FR15 Continued from Friday 8:30 AM - 2:30 PM

Dimi Jo by Pam Milat (1 1/2 day class \$45.00)



On Saturday you will continue weaving your kits from Friday evening. Not all students will complete their basket w/in the class time but will have all materials and instructions to do so independently. **Special Tools Required: Awl; spoke weights**

Intermediate HRS: 8

SIZE: 5"x5"x5"

SA05 8:30 AM - 3:30 PM

Herringbone weave basket with fancy triple braid wrapped handle by Cheryl Dixon \$60.00



The entire basket is woven in the herringbone weave. Wrap the handle making the triple braid with cane.

Intermediate HRS: 6

SIZE: 8"x12"x6"  
without handle

SA06 8:30 AM - 3:30 PM

Pony Express Mail Pouch by Sandy Atkinson \$58.00



Designed to fit against a wall or hang on a stairway banister, this makes a nice tote to put things in that need to be taken upstairs or to another room. Could easily be used as a purse, also. The filled in base is worked around the leather handle which also weaves up the sides of the basket. Triple twining around the basket in three sections, then with a front dip finally finishes the basket. The leather handle designed for this basket has an ivory ring accent. **NOTE: Embellishments are subject to change.**

Intermediate HRS: 6

SIZE: 5 1/4"x9 1/2"  
front 7 1/2"

## Saturday's Baskets

SA01 8:30 AM - 11:30 AM

**KY Tobacco Stick Broom by Bev Larson \$52.00**



The Tobacco stick is a part of our American heritage that is becoming a part of our past. We will make a flat broom or round broom on an authentic tobacco stick using traditional Appalachian techniques. Color choices in the cording.

All Levels HRS: 3

SIZE: varies

SA02 8:30 AM - 12:30 PM

**Japanese Top Knot by Anne Bowers \$40.00**



This sweet little ribbed basket will cover the basics of ribbed basketry. It is topped with a sweet little knot on the handle. Basket will be woven with dyed reed and cane. Techniques to learn will include weaving the god's eyes, whittling and inserting ribs, shaping and weaving to a successful conclusion. **Special Tools Required: Sharpened knife**

Intermediate HRS: 4

SIZE: 4"x4"

SA03 8:30 AM - 12:30 PM

**Quad Point Footstool by Steve Atkinson \$55.00**



All Levels HRS: 4

SIZE: 15 1/2"x15  
1/2"x14" seat at 13"

The seat of this stool is woven in a four-point quad twill using two colors, which is a challenge. You will also learn a second weave under the seat. Many colors of Shaker tape and nylon webbing will be brought to class to choose from. The pine stool is stained, sealed, ready to weave on. **NOT TO BE USED AS A STEPPING STOOL. Special Tools Required: long shank weaving tool, packing tool, 4-3" clamps**

## Thursday's Baskets

TH04 12:00 PM - 9:00 PM

**Emma's Pumpkin Basket by Anne Bowers \$67.00**



The epitome of fall is the sight of pumpkins, and this basket will get you right in the mood! Full of great techniques, students will learn how to make a double spoked base, weave a foot, continuous weave and shape. The lid is embellished with a real stem, leather leaves and fiber covered wire curlicues.

Intermediate HRS: 8

SIZE: 8"x7"

TH05 12:00 PM - 9:00 PM

**Lake Ontario by Sandy Atkinson \$85.00**



The fourth in a series of the Great Lakes Baskets, this one is a tote with many features, such as a filled base, woven over dyed spokes, diagonal weave, leather lacing, leather handle, and triple twining. Colors of basket are sand, teal green, marine, and light blues. Also, included in the class is a rock wrapped on an actual rock from Lake Ontario. Rocks will vary in size and shape.

Advanced HRS: 8

SIZE: 5 3/4"x12

1/4"x12 1/4"

TH06 12:00 PM - 9:00 PM

**Nantucket Picnic Caddy by Jan Beyma \$95.00**



Intermediate HRS: 8

SIZE: 6"x7"

Students will learn the basics of setting up and finishing a Nantucket basket. Students will insert cane staves into the base and begin weaving with cane in an over under pattern and change to a twill in the middle and back to the over under pattern to finish. Basket will be woven over a metal class mold. Base and rim are cherry and caddy insert is maple all wood pieces will be pre-finished. A tool kit will be provided for class use. This basket can be used as your picnic caddy or for your basket tools, or crafts or remove the insert and use the basket without caddy.

## Thursday's Baskets

TH07 2:00 PM - 5:00 PM

Parlor Broom by Bev Larson \$52.00



A beautiful broom made on a shorter natural stick than a sweeper. We will explore the options of stitching round or flat and adding decorative seed heads to our brooms. Handle options vary.

All Levels HRS: 3

SIZE: varies

TH08 2:00 PM - 6:00 PM

The Ottoman by Steve Atkinson \$95.00



This sturdy ottoman is a perfect fit for a large chair or couch or as an accent piece. Woven on a wood frame with raised panel accents on the legs and a hidden center reinforcement. In class the student can choose from a great color selection of 1" Shaker tape and/or nylon webbing. Learn two weaves on the bench, one on top, one under the seat. The shown top is woven in a 3 X 3 twill pattern. **NOT TO BE USED AS A STEPPING STOOL.** **Special Tools Required: Long shank weaving tool, 4-3" clamps, and packing tool**

All Levels HRS: 4

SIZE: 21"x26"x14"  
seat 13"

TH09 5:00 PM - 7:00 PM

Mandala Basket by Cheryl Dixon \$25.00



Wood bottom basket that has a cutout mandala pattern. This wood bottom has holes and #4 round reed pieces are inserted through to make the spokes. Woven using a continuous weave using space dyed reed. Also has a few rows of twining at the top and a simple braided rim, using the spokes. Tools will be provided.

All Levels HRS: 2

SIZE: 4"x8"

## Friday's Baskets

FR14 4:30 PM - 8:30 PM

Verdigris Wall Basket by Anne Bowers \$70.00



Based on an antique floral basket design, this basket is meant to be hung on a wall or door. Features a wood base with spokes attached prior to class. Woven with flat and round reed, basket is flat on the back and round in the front. **If weather permits, baskets may be painted after class.**

Intermediate HRS: 4+

SIZE: 9"x24"

FR15 6:30 PM - 9:30 PM AND

SA04 8:30 AM - 2:30 PM

Dimi Jo by Pam Milat \$45.00



This class will start Friday evening and finish on Saturday. Using #4 RR dyed spokes and natural cane, students will weave a colorful diminutive size of the Josephine Knot basket. Class kits will be pre-prepared with 2 each spokes of 6 randomly selected bold and brilliant colors. Not all students will complete their basket w/in the class time but will have all materials and instructions to do so independently. **Special Tools Required: Awl; spoke weights**

Intermediate HRS: 8

SIZE: 5"x5"x5"

---

## Save the date

October 6 - October 8, 2022

October 5 - October 7, 2023

## Friday's Baskets

FR12 1:30 PM - 9:30 PM

Cape Fear Ice Bucket by Jan Beyma \$95.00



Intermediate HRS: 8  
SIZE: 9"x7"

Students will learn the basics of setting up and finishing a Nantucket basket. Students will insert cane staves into the base and begin weaving with cane in a twill pattern. Basket will be woven over a galvanized container which will stay in the basket. Base and rim are cherry and will be pre-finished. Lid will be the galvanized lid that came with the container. Plastic insert for ice and scoop included. **Tools will be provided.**

FR13 1:30 PM - 9:30 PM

Granny's Gift by Dani Sue Anderson \$90.00



All Levels HRS: 8  
SIZE: 22 1/2"  
diameter

The last basket supply Granny ever ordered was seagrass. It was one of the things she was out of, and she needed just a little; so, she was going to order me a roll to get me started and also one for her. Well, something happened, and she accidentally ordered a whole box of seagrass, 25 coils of it. She checked into returning it, but the shipping was so high, it made more sense to keep it. She told me that day that I would be using this seagrass after she was dead and gone. Well, we are indeed using it; each member of the Flock 2020 received a coil of that seagrass – hence the basket name Granny's Gift. This basket design is rich in story and detail and is no small thing. Basket dimensions, 70" circumference, 22.5" diameter and 11" radius. The 5" wooden round base would have a personalized engraved letter on it and also has a hanger notch out of the back of the base for easy hanging. **Colors options available before conference.**

## Thursday's Baskets

TH10 5:00 PM - 9:00 PM

Peppermint Bark by Dani Sue Anderson \$70.00



All Levels HRS: 4  
SIZE: 5"x11"x36"

I wonder what smells and tastes come to mind when asked about your favorite holiday eats. I wonder what memories flood your mind when trying to decide what your favorite part of the season, or best family tradition is. One of my favorite things was my mom and I using peppermint bark for our holiday candies. This basket yells yummy and joy which I think we all hope for as family and friends gather over the holidays. This basket adds a lot of cheer to any space with all its bells and whistles of whitewashed reed, 2 rows of peppermint ribbon and a holiday peppermint embellishment not to mention the puffy bow attached to the side. Come and weave a basket that celebrates both the old and new of the holiday season. Basket dimensions: 5" inches tall, 11" diameter, 36" circumference.

### WHAT TO BRING

To make the most of your weaving experience it helps to have the proper equipment. We suggest that you bring:

- A dishpan or bucket
- An old towel
- Sharp clippers or strong scissors
- Small and large packing tools
- An awl or ice pick
- Several (12 or more) clips or clothespins
- Flexible tape measure
- Spray bottle
- Needle nose pliers
- Pencil
- Sandpaper
- Cable ties (variety of sizes)
- Sharp knife
- Some classes may require special tools. Please read the description carefully
- Silent Auction items
- Individually wrapped snacks
- Bring your name holder if you have one from a prior convention.

# Celebrating — 25 YEARS —

## Friday's Baskets

**FR01 8:30 AM - 11:30 AM**

**Beginning Broom Primer by Bev Larson \$45.00**



**All Levels HRS: 3**  
**SIZE: varies**

Using the traditional Appalachian methods with a modern twist of color. A great chance to learn the basics of broom making. You will learn the basic skill of tying a broom, starting with a small whisk broom, a scrubber, cake tester and continue to an angel wing whisk. You will have choices of colored cord.

**FR02 8:30 AM - 12:30 PM**

**Bootstrap Tote by Sandy Atkinson \$55.00**



**Beginners+ HRS: 4**  
**SIZE: 5 1/4"x12"x7 3/4" w/handle 17"**

The filled in base of this basket tote continues up the side ends into chicken feet. The front side has boot hooks woven in so leather can be laced up the side creating a unique feature to the basket. The leather strap handle that was designed for this basket has wooden rings inserted on the upper strap, is woven from the base up. A rim filler of braided fabric finishes off the top edge with cane lashing. A nice size tote that can easily be used for a purse or small tote. Note: some experience in twining and lashing required

## Friday's Baskets

**FR09 1:30 PM - 5:30 PM**

**Buffalo Plaid Bench by Steve Atkinson \$125.00**



**All Levels HRS: 4**  
**SIZE: 17 1/2"x33"x18"**

This new bench is made to fit into any room or decor' in your home. Three colors of nylon webbing in two sizes, the new 2" wide and 1" wide are used to create the new popular buffalo plaid. The bench features a center support cross board, full length luan support board, plus padding, are all completely hidden under weaving. Color choices are red/black/gray or green/black/gray. **NOT TO BE USED AS A STEPPING STOOL.** **Special Tools Required: Long shank weaving tool, packing tool, needle nose pliers**

**FR10 1:30 PM - 7:30 PM**

**A day with Whisks by Bev Larson \$68.00**



**All Levels HRS: 6**  
**SIZE: varies**

Using the traditional Appalachian methods with a modern twist of color. The next step in basic broom making. We will explore various styles of whisk brooms. Try your hand at angel wings, turkey wings, hens' wings, ostrich wings, with or without plaiting. You will have choices of colored cord, broom corn and plaiting material. You will have the opportunity to complete several brooms.

**FR11 1:30 PM - 7:30 PM**

**Shades of Black on Vine by Sandy Atkinson \$68.00**



**Intermediate HRS: 6**  
**SIZE: 11"x8" w/handle 14"**

This rib basket is woven on grapevine hoops and is a challenge but, also, so much fun to create. All the reed is black or gray, the god's eye is woven in black reed with black seagrass woven in next. Black and gray yarns are also woven in for lots of texture. A basket for a creative adventure. All measurements are approximate.



## Friday's Baskets

FR06 8:30 AM - 3:30 PM

Star Basket by Anne Bowers \$48.00



Learn how to weave the classic Star Basket. The tri-axle weave creates 6 points with a dyed overlay. Basket sides round out. Rim is lashed with cane. Anne's foolproof pattern will help you complete this challenging weave. **Special tools required: Spoke weight**

Intermediate HRS: 6

SIZE: 3 1/2"x11"

FR07 8:30 AM - 5:30 PM

Black Velvet by Pam Milat \$65.00



This eye-catching basket is woven on an ebony stained ellipse base. Students will continuously weave a 7 spoke twill pattern, reverse direction midway to create a 'zag' look, and then complete their basket with dyed rim pieces.

Intermediate 8 HRS

SIZE: 8.5"x10 1/2"x4 1/2"

FR08 8:30 AM - 5:30 PM

Large Fairy House/Gnome Home Condo by Cheryl Dixon \$65.00



Techniques used in this basket are a woven solid bottom, triple twining, chase weaving, stacking, ti-twining using palm inflorescence and/or pine needles. A Matchstick border tops off the basket. The roof is made using Polymer clay as well as the door. This class is only for the basket. **Special Tools required: Super glue gel. Also Roof and doors are for sale, if you do not take the Roof/Fairy Door class.**

Intermediate+ HRS: 8

SIZE: 8"x4"x12"

## Friday's Baskets

FR03 8:30 AM - 12:30 PM

Kingston Bar Stool by Steve Atkinson \$85.00



Woven bar stool is a perfect height for kitchen counter or a high table. Woven with Shaker tape and/or nylon webbing allows the student to have a large selection of color combinations. Seat includes foam padding for comfort and luan for support. Stool is stained and varnished. Students have a choice of pattern woven into seat. **Notify us a month in advance if have preferred stain color or if need a different height, may be additional charge for higher height. Special Tools required: 1 large clamp, packing tool**

All Levels HRS: 4

SIZE: 17"x17"x27"

FR04 8:30 AM - 12:30 PM

La Bourse by Dani Sue Anderson \$55.00



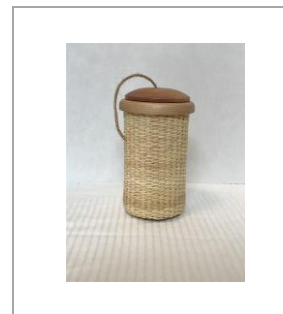
La Bourse is a charming purse that's ready for an outing. She has all kinds of personality and style and looks good no matter what she's doing. This darling basket has a woven base, a set of sturdy handles, and an adorable 2" round wooden disk with your monogram engraved on it. She is 10" long by 5.5" wide with the woven part of the basket stands 7" tall, handles included it's 12" tall. **Colors options available before conference.**

All Levels HRS: 4

5 1/2"x10"x12" w/handles

FR05 8:30 AM - 12:30 PM

Nantucket Garden Twine by Jan Beyma \$70.00



Students will learn to set up and weave a twill pattern in their Nantucket basket. Basket is woven over a tin container that remains part of the basket. Base, rim and lid are cherry and are pre-finished. Comes with the garden twine. Use the tin for twine or string. It's a decorative container to always know where the twine/string is. Tools will be provided.

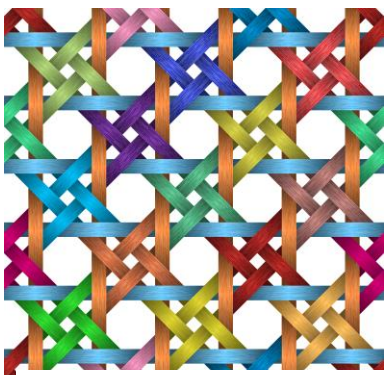
Intermediate HRS: 8

SIZE: 6"x3"

## WEAVING SKILL LEVELS

Please evaluate your skill level, not only for your total weaving experience, but also for your experience using the techniques offered in the classes you are considering. Remember it is not fair to the instructor or the other students to take a class that you are not ready to handle.

- **All Levels** These classes are offered to students of all skill levels from Beginner to Advanced
- **Beginner weavers** have little or no weaving experience having woven only a few baskets. They need more practice with basic weaving techniques, bases and shaping. These weavers are becoming proficient in basic weaving techniques, including over/ under weaving, start/stop weaving, twining, and rim lashing. They are learning to control shape and will be introduced to new pattern weaves such as twill, different twining methods, and rim and handle finish variations. Please Note: Additionally, if you consider taking a class in a material you have never used, you will be considered a beginner in that class.
- **Intermediate weavers** have gained proficiency in weaving techniques. They can begin with ease and have mastered several weaving techniques. They do not have difficulty setting up bases, twining, completing over/under weaves and creating rims using the materials offered in a class.
- **Advanced weavers** are proficient. They have mastered weaving techniques and are ready to take on more challenging projects. Teachers are confident these students have achieved this skill



level when attending class. Basic skills are not reviewed due to time constraints. These weavers can design baskets on their own but require new challenges.

<https://www.vecteezy.com/free-vector/basket-weave-pattern>">Basket Weave Pattern Vectors by Vecteezy

## Schedule of Events:

### Thursday, October 7

8:00 am - 11 am Vendors and Teachers Set Up am  
10:00 am KBA Board Meeting  
**11 am - 6 pm** **Welcome, Registration and silent auction**  
12 noon - 9 pm Classes  
Lunch & Dinner on your own

### Friday, October 8

8:30 am - 11 am Registration  
8:30 am - 9:30 pm Classes and silent auction  
11 am - 6 pm Registration  
12:30 pm - 1:30 pm Annual Meeting includes Lunch

### Saturday, October 9

8:30 am - Noon Registration and silent auction  
8:30 am - 3:30 pm Classes  
NOTE: Lunch on your own; varies by teacher  
4 pm Finish and Head for Home  
Mark your calendar for Oct 6 - 8, 2022 and Oct 5 - 7, 2023.

## Food Choices:

- Friday's lunch is included with membership
- There are restaurants within driving distance.
- You can bring food in to eat while you are at the convention
- We will have a snack table, so please bring a favorite individual wrapped snack to share with everyone.
- Coffee, water and soft drinks are provided by KBA.

## Vendors:

There may be more vendors, but these are confirmed as of April 1, 2021

Steve and Sandy Atkinson <http://www.sandyatkinson.com/>

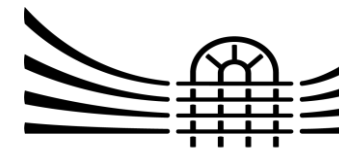
Jan Beyma [beyma@bellsouth.net](mailto:beyma@bellsouth.net)

Cheryl Dixon <https://www.etsy.com/shop/PajamaJoesStudio>

Pam Milat [mspam\\_gs@yahoo.com](mailto:mspam_gs@yahoo.com)

## Quick Glance at Teachers

<b>Anne Bowers</b>	TH04 FR06 FR14 SA02	<b>Emma's Pumpkin Basket</b> <b>Star Basket</b> <b>Verdigris Wall Basket</b> <b>Japanese Top Knot</b>
<b>Bev Larson</b>	TH07 FR01 FR10 SA01	<b>Parlor Broom</b> <b>Beginning Broom Primer</b> <b>A day with whisks</b> <b>KY Tobacco Stick Broom</b>
<b>Cheryl Dixon</b>	TH02 TH09 FR08 SA05	<b>Roof and fairy door SEE FR08</b> <b>Mandala Basket</b> <b>Large Fairy House</b> <b>Herringbone Weave/Handle</b>
<b>Dani Sue Anderson</b>	TH01 TH10 FR04 FR13 SA07	<b>Staying Neutral</b> <b>Peppermint Bark</b> <b>La Bourse</b> <b>Granny's Gift</b> <b>Toss It</b>
<b>Jan Beyma</b>	TH06 FR05 FR12 SA08	<b>Nantucket Picnic Caddy</b> <b>Nantucket Garden Twine</b> <b>Cape Fear Ice Bucket</b> <b>Trevor's Sweet Stash</b>
<b>Pam Milat</b>	TH03 FR07 FR15 SA04	<b>Bowl of Color</b> <b>Black Velvet</b> <b>Dimi Jo</b> <b>Dimi Jo</b>
<b>Sandy Atkinson</b>	TH05 FR02 FR11 SA06	<b>Lake Ontario</b> <b>Bootstrap Tote</b> <b>Shades of Black on Vine</b> <b>Pony Express Mail Pouch</b>
<b>Steve Atkinson</b>	TH08 FR03 FR09 SA03	<b>The Ottoman</b> <b>Kingston Bar Stool</b> <b>Buffalo Plaid Bench</b> <b>Quad Point Footstool</b>



## **The Center** for Rural Development

2292 US-27 #300, Somerset Kentucky

### Hotels/Motels in the Somerset Area AND distance from the Convention

America's Best Value Inn 800) 325-2525 4.6 Miles from Center 127 N. U.S. 27 (light # 3)	Hampton Inn Suites (800) 426-7866 1.5 Miles from Center 4141 S. US 27 (light 23)
Best Western Midtown Inn & Suites (800) 937-8376 108 Jefferson Drive (light # 4)	Holiday Inn Express & Suites (888) 465-4329 1.5 Miles from Center 50 Stevie Lynn Drive (light 23)
Budget Inn (606) 679-1006 3,0 Miles from Center 1564 U.S. 27, Somerset (light 12)	Motel 6 (606) 678-4195 3.0 Miles from Center 1532 U.S. 27 (light 12)
Comfort Inn & Suites (800) 228-5150 1.4 Miles from Center 82 Jolin Dr. (between lights 23 & 24)	Quality Inn & Suites (877) 535-6423 4.7 Miles from Center 240 N. U.S. 27 (light 2)
Country Inn & Suites by Radisson (800) 456-4000 5.7 Miles from Center 515 N. U.S. 27 (lights 1 & 2)	Red Roof Inn (606) 678-8115 1201 S Highway 27 S
Courtyard By Marriott (888) 236-2427 Adjacent to the Center 2254 S. Highway 27	Super 8 Motel by Wyndham (800) 800-8000 3.9 Miles from Center 601 S. U.S. 27 (lights 7 & 8)

